

# CHICAGO FAUCETS



2100 SOUTH CLEARWATER DRIVE  
DES PLAINES, ILLINOIS 60018-5999

Last As Long As The Building

FITTING NO.

2301

SUBMITTED MODEL NO.

JOB NAME

ITEM NO.

SUBMITTED AS SHOWN

SUBMITTED AS NOTED

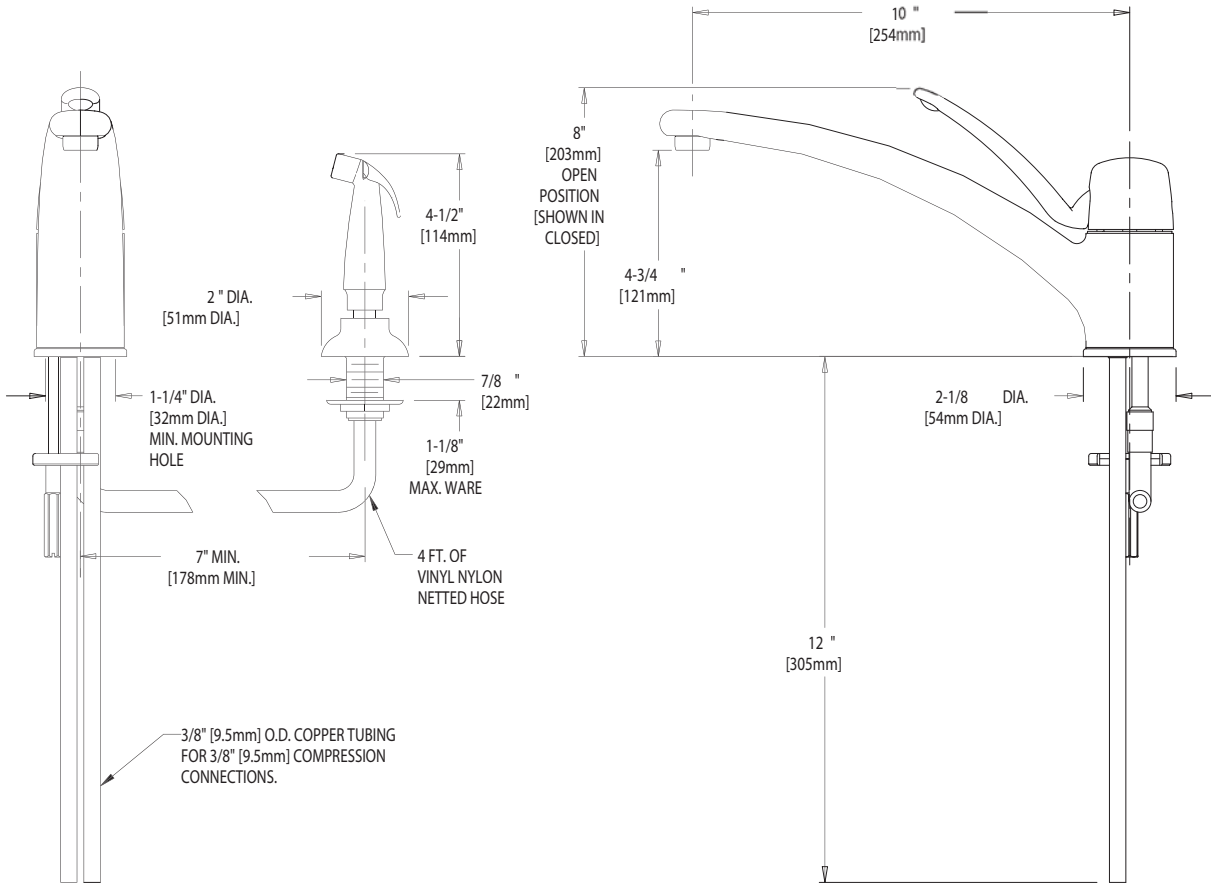
SEE ATTACHED FOR  
SUBMITTED MODIFICATION



ADA COMPLIANT

IS ASSUMED FOR USE OF SUPERCEDED OR VOIDED DATA.

ROUGHING IN DIMENSIONS MAY VARY AND ARE SUBJECT TO CHANGE. NO RESPONSIBILITY



DIMENSIONS IN INCHES AND [MILLIMETERS].

**TECHNICAL DATA**

- MARATHON DECK MOUNTED FITTING WITH SPRAY
- 10" CAST BRASS SPOUT
- METAL LEVER HANDLE
- CERAMIC MIXING CARTRIDGE
- 3/8" COPPER SUPPLY TUBE INLETS
- TEMPERATURE LIMIT STOP
- FINISH: CHROME PLATE

- VOLUME CONTROL
- INTEGRAL WATER HAMMER PREVENTER
- E12 SOFTFLO OUTLET
- 2.2 GPM [8.3 L/min.] FLOW RATE
- NSF 61 COMPLIANT

DATE: 5-1-02

BY: JAR

CHK'D:

APP'D:

REV: A

2301