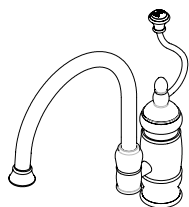


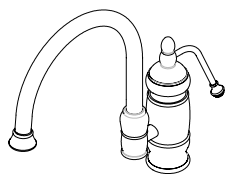


Belle Forêt
collection

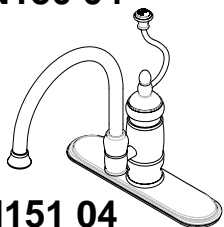
N150, N151 SINGLE HANDLE KITCHEN FAUCET



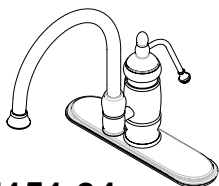
N150 03



N150 04



N151 04



N151 04

Product Features

1 or 3-Hole (with deck plate) Installation

2.2 GPM @ 60PSI water saving aerator

Brass body

1/2" 14 NPS Inlet

Ceramic cartridge

Handle:

Spiral handle N150 03, N151 03

Pump handle N150 04, N151 04

Standards/Approvals

N155, N156 meets or exceeds:

ANSI/ASME A112.18.1

ANSI/NSF 61 – Sec 9

IAPMO/UPC

California Proposition 65

Massachusetts

Meets ADA requirements



UPC®



PRODUCT SPECIFICATION:

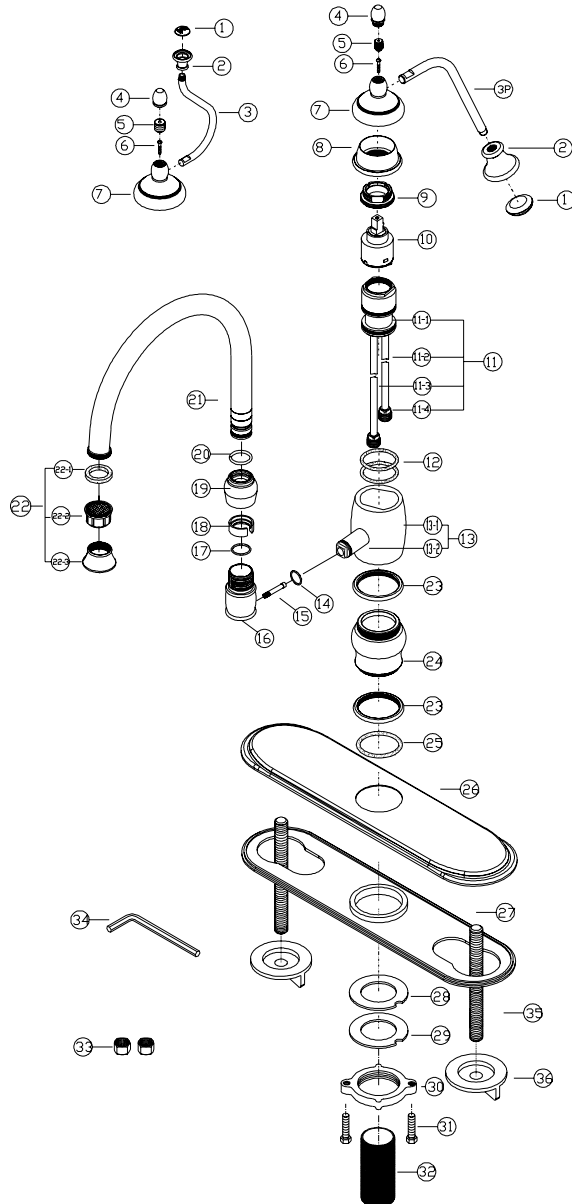
Single-handle kitchen faucet shall have a brass body, ceramic cartridge, 9-15/16" spout and metal spiral or metal pump handle. Product shall be able to be installed in 1or 3-hole installation. Product shall be Belle Forêt model N15_____.



Belle Forêt
collection

N150, N151 SINGLE HANDLE KITCHEN FAUCET

PARTS BREAKDOWN





Belle Forêt
collection

N150, N151 SINGLE HANDLE KITCHEN FAUCET

PARTS LISTING

No	Name	Kit# / Part#	Q'ty	No	Name	Kit# / Part#	Q'ty
1	Porc. Index	N/A	1	17	O-RING	663970N	1
2	Knob		1	18	Clip ring		1
3	Spiral wire		1	20	O-RING		1
3P	Pump wire		1	19	Bonnet	N/A	1
4	Cap		1	21	Spout assembly		1
5	Set screw		1	22	Aerator	500767Nxx	
6	Screw		1	22-1			1
7	Canopy		1	22-2			1
8	Cap		1	22-3	1		
9	Retainer nut	1	23	Trim ring	012153xx	1	
10	Cartridge	507348N	1	24	Body base	N/A	1
11	Body assembly	1	25	O-RING	1		
11-1		1	26	Deck plate	1		
11-2		1	27	Bottom plate	1		
11-3		1	28	Seal	1		
11-4		2	29	Washer	1		
12	O-RING	2	30	Wing nut	1		
13	Sleeve		31	Screw	2		
13-1		1	32	Shank	1		
13-2	1	33	Nut	2			
14	O-RING	1	34	Allen wrench	1		
15	Connector	1	35	Bolt	2		
16	Spout base	1	36	Nut	2		

xx designates finish matched parts.