

REPRISE SINGLE HOLE FAUCET, MODEL 5535.204

- Classic Victorian styling
 - Coordinated accessories available
 - Cast brass construction
 - Quarter-turn washerless ceramic disc valve cartridges (reversible for use with cross handles)
 - Cross handles with porcelain index buttons
 - Includes all metal drain assembly to accommodate European and US china
 - Center-hole (1-3/8" dia.) only
- Specify faucet and pop-up drain assembly finish: chrome, polished brass, polished nickel or brushed nickel



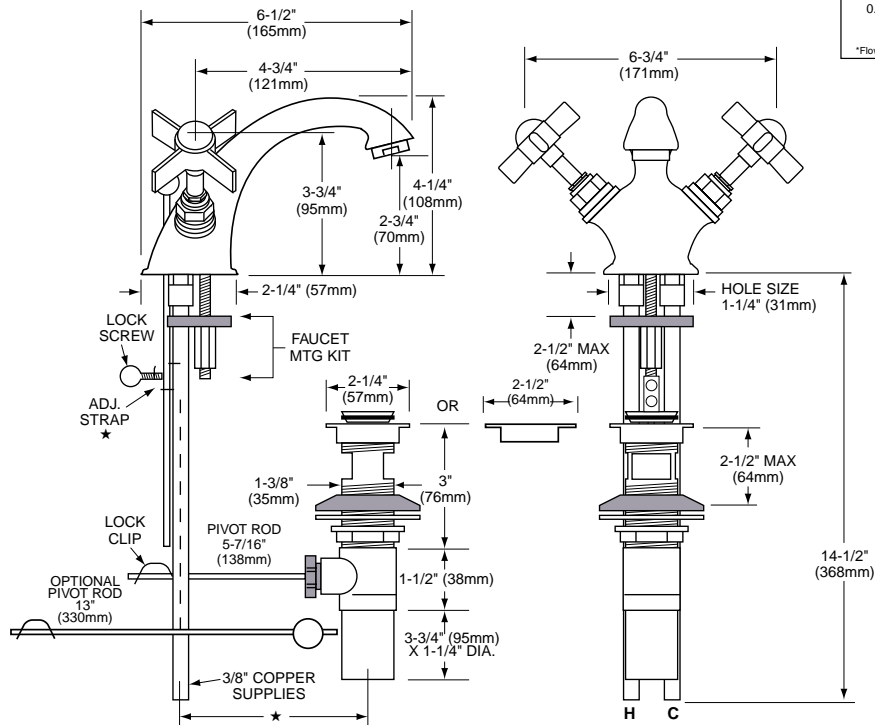
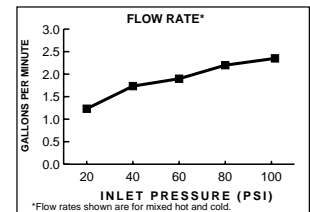
Maximum Flow Rate: 2.2 gpm (8.8 L/min.)

Low Lead: Meets NSF standard 61/Section 9 & Prop 65 lead requirements.

CODES AND STANDARDS

These products meet or exceed the following codes and standards:

ASME A112.18.1
CSA B125
NSF 61/Section 9



NOTES:

★ DRAIN PIVOT ROD STRAP CAN BE SHAPED TO ACCOMMODATE FAUCET-TO-DRAIN MOUNTING CENTERS UP TO 8" (203MM). INSTALLATION INSTRUCTIONS SUPPLIED WITH FAUCET ASSEMBLY.

IMPORTANT: Dimensions of faucets are nominal and may vary within the range of tolerances established by ANSI Standard A112.18.1. These measurements are subject to change or cancellation. No responsibility is assumed for use of superseded or voided pages.